



1420 Estates Avenue
Charlotte, NC 28209



Directions: Take I-77 to the Woodlawn exit (exit 6A). Go east on Woodlawn and at Park Rd., turn right. The community is ahead on the right.



Charlotte, North Carolina

Package Features

- ❖ Complete Furnishings Package
- ❖ Complete Housewares Package
- ❖ Bed, Bath, & Kitchen Linens
- ❖ Basic Expanded Cable
- ❖ 25" Television
- ❖ Utilities (Electric, Water, & Gas)
- ❖ Microwave
- ❖ Full Size Washer and Dryer

Apartment Features

- ❖ Fully Equipped Kitchen
- ❖ 9' Ceilings with Crown Molding
- ❖ Hardwood Floors*
- ❖ Breakfast Room with Bay Windows
- ❖ Spacious Floor Plans
- ❖ Private Patios/Balconies
- ❖ Fireplaces*

Property Features

- ❖ State of the Art Fitness Center
- ❖ Gated Access
- ❖ Sparkling Swimming Pool
- ❖ Elegant Clubhouse
- ❖ Executive Business Center
- ❖ Parking Garage with Elevator Access
- ❖ Convenient to Shopping, Dining, and Entertainment

*In Select Units

For Reservations & Information

1-800-528-0139

info@temp-housing.com

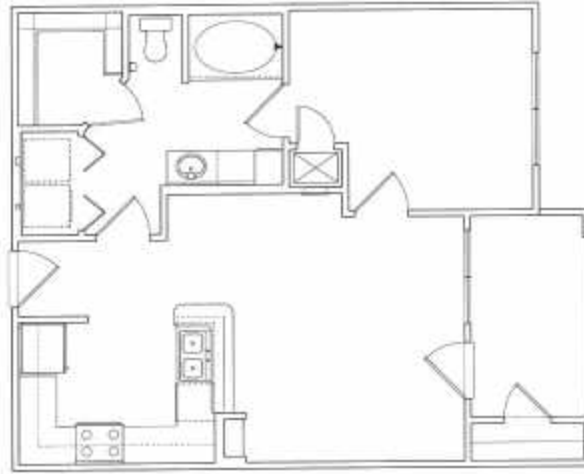
Visit Our Website:

<http://www.temp-housing.com>



Floor Plans

1 BR/ 1BA, The Kensington



2 BR / 2BA, The Bishop

3 BR/ 2 BA The Fleming



*Other floor plans may apply.